

Britax PMG Limited

supply over **3/4 million** mirror parts to original equipment manufacturers **per year.**

Mirrors

7120.320.A 7121.320.A UNIVERSAL FIT MIRROR

7120.320.A Rear View Mirror.
Glass spherical radius R1400mm.
To fit arms $\varnothing 10 - \varnothing 22\text{mm}$

Spare Parts

Z4002.498.10 Spare Glass (10 Pack)

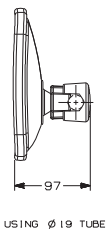
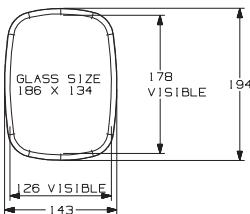
7121.320.A Rear view mirror.

Flat glass.
To fit arms $\varnothing 10 - \varnothing 22\text{mm}$

Spare Parts

Z3002.068.10 Spare Glass (10 Pack)

Glass is only available in pack quantity stated.



7180.320 UNIVERSAL FIT MIRROR

Rear view mirror.

Glass spherical radius R2060mm.

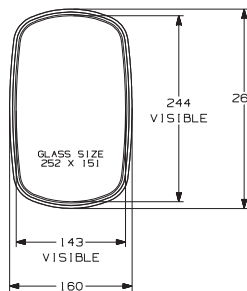
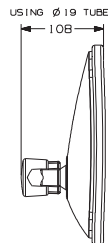
To fit arms $\varnothing 10 - \varnothing 22\text{mm}$

7180.320.A

Spare Parts

Z4002.488.10 Glass (10 Pack)

Glass is only available in the pack quantity stated.



Britax mirrors are specified by the following vehicle manufacturers:-
CNH, New Holland, John Deere, AGCO, Caterpillar, Valtra, JCB, Volvo Construction Equipment, Terex, Modec, Linde Heavy Truck, Scarab Sweepers, Emmegi, Komatsu, Johnston Sweepers.